

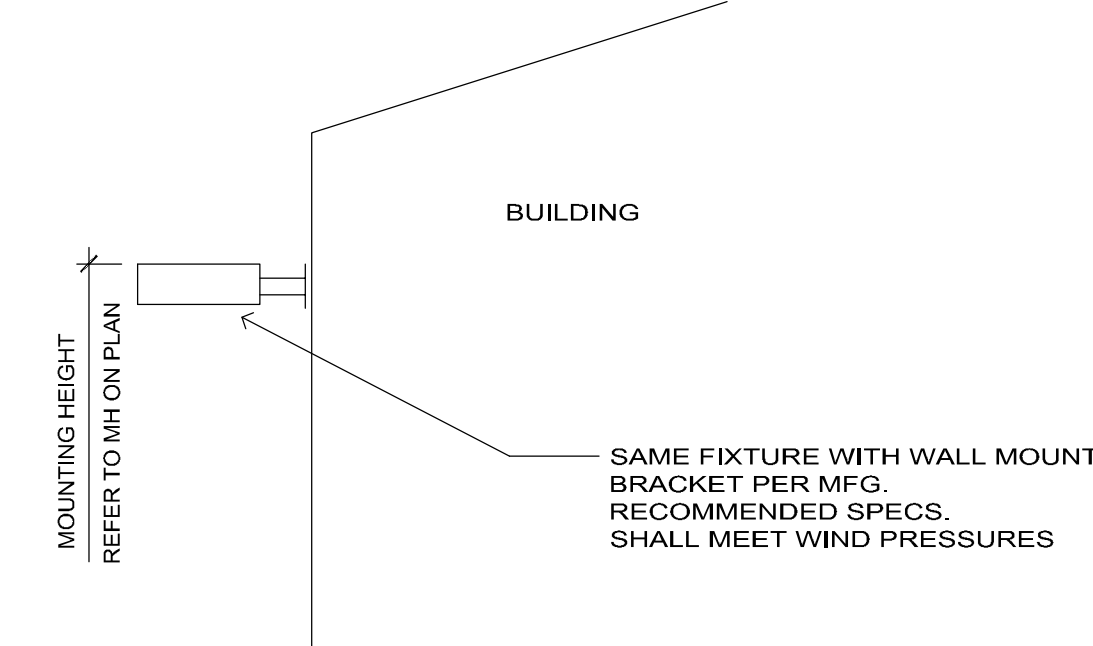
IT IS A VIOLATION OF THE LAW FOR ANY PERSON, UNLESS ACTING UNDER THE DIRECTION OF A LICENSED ARCHITECT TO ALTER THESE PLANS AND SPECIFICATIONS. THIS DOCUMENT CONTAINS PROPERTY INFORMATION AND SHALL NOT BE USED OR REPRODUCED, OR ITS CONTENTS DISCLOSED, IN WHOLE OR IN PART, WITHOUT THE PRIOR WRITTEN CONSENT OF GALLO HERBERT ARCHITECTS. COPYRIGHT 2021 GALLO HERBERT ARCHITECTS



POLE MOUNTED LIGHT FIXTURE SILVER COLOR (NOT SHOWN HERE) CONCRETE POLES

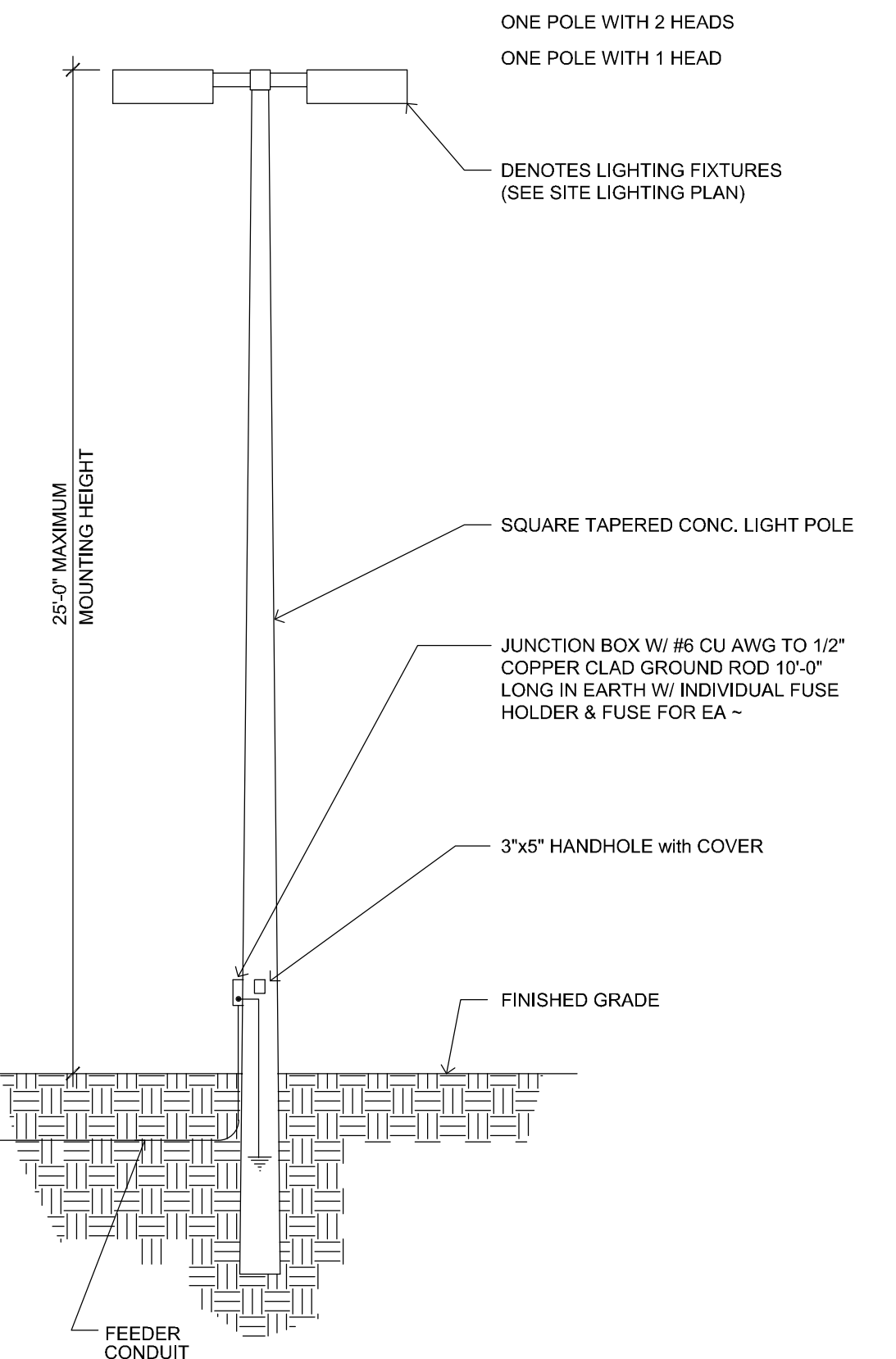


WALL MOUNTED LIGHT FIXTURE SILVER COLOR. (NOT SHOWN HERE)



LIGHTING WALL MOUNT DETAIL

SCALE: 1/4" = 1'-0"



LIGHTING STANDARD DETAIL

SCALE: 1/4" = 1'-0"

SUPPLIER OF POLES SHALL SUBMIT ENGINEERED SHOP DRAWINGS SIGNED & SEALED BY A REGISTERED PROFESSIONAL ENGINEER SIZED FOR THE EFFECTIVE PROJECTED AREA (EPA) OF THE LIGHT FIXTURES ULTIMATELY INSTALLED AND SHALL DETERMINE THE REQUIRED POLE EMBEDMENT DEPTH FOR THE CODE REQUIRED WIND VELOCITY PRESSURE

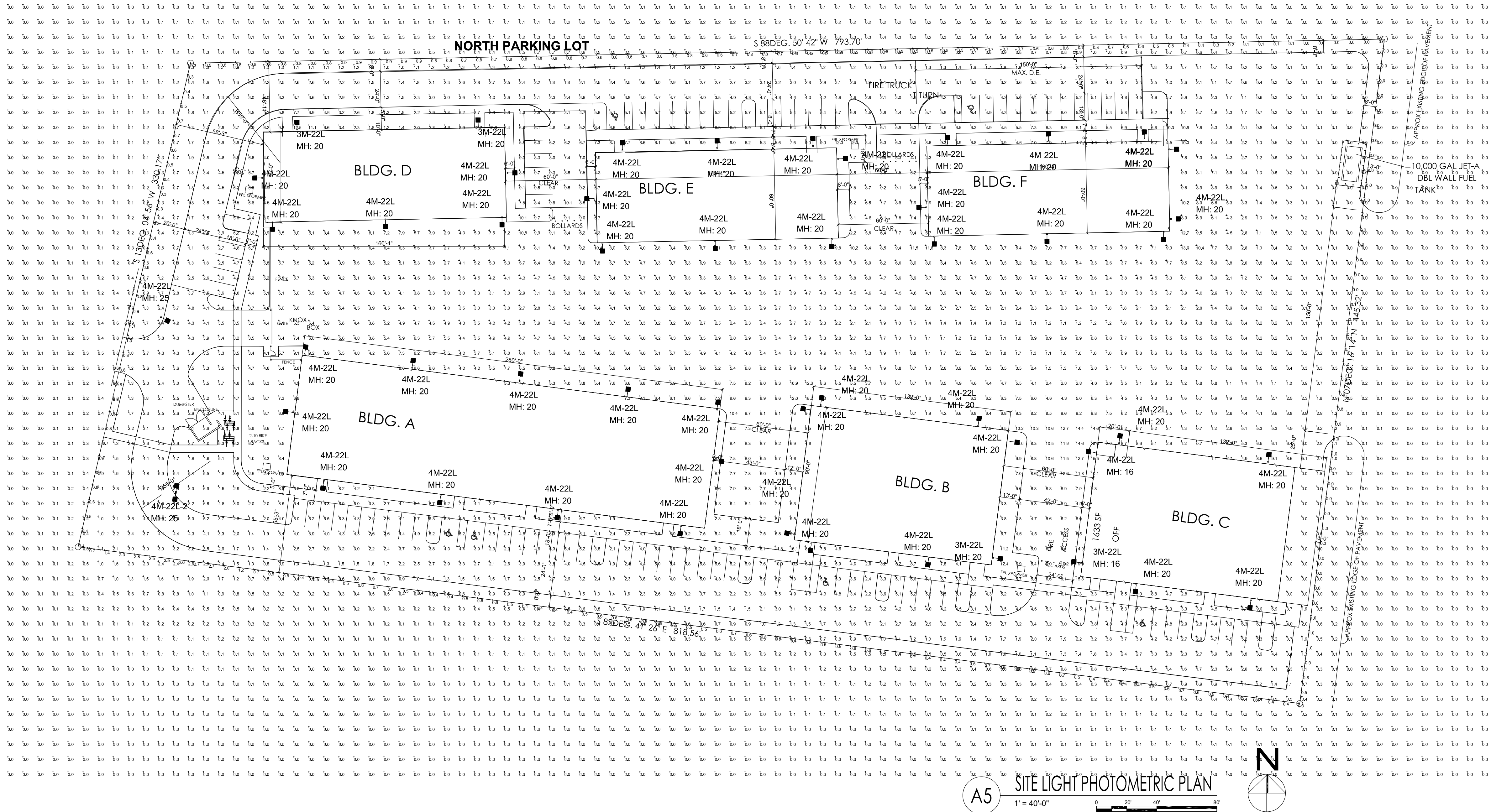
Luminaire Schedule							
Symbol	Qty	Label	Arrangement	LMF	Lum. Lumens	Lum. Watts	Part Number
	4	3M-22L	SINGLE	1.000	22100	132	OSQL-B-22L-40K7-3M-UL-NM-___ w/OSQ-ML-B-AA-___
	46	4M-22L	SINGLE	1.000	22100	132	OSQL-B-22L-40K7-4M-UL-NM-___ w/OSQ-ML-B-AA-___
	1	4M-22L-2	2 @ 180°	1.000	22100	132	OSQL-B-22L-40K7-4M-UL-NM-___ w/OSQ-ML-B-AA-___

Calculation Summary (Footcandles calculated using initial lumen values @ 25°C)						
Label	Units	Avg	Max	Min	Avg/Min	Max/Min
CalcPts	Fc	2.13	19.9	0.0	N.A.	N.A.
PROPERTY LINE	Fc	0.58	2.8	0.0	N.A.	N.A.
AIR SIDE	Fc	4.57	18.6	0.5	9.14	37.20
DUMPSTER ENCLOSURE	Fc	4.25	4.9	3.6	1.18	1.36
NORTH PARKING LOT	Fc	3.96	10.1	1.0	3.96	10.10
SOUTH PARKING LOT	Fc	3.31	10.0	1.0	3.31	10.00
TIE DOWN	Fc	1.10	7.8	0.0	N.A.	N.A.

Poles to be provided by others.

Additional Equipment:
(52) OSQ-ML-B-AA___ (Adjustable Arm Mount)
(49) WM-4M___ (Wall Mount Elbow)

*** CUSTOMER TO VERIFY ORDERING INFORMATION AND CATALOGUE NUMBER PRIOR TO PLACING ORDER ***



CREE LIGHTING

A COMPANY OF IDEAL INDUSTRIES, INC.
9201 Washington Ave, Racine, WI 53406 https://creeighting.com - (800) 236-6800

Illumination results shown on this lighting design are based on project parameters provided to Cree Lighting used in conjunction with luminaire test procedures conducted under laboratory conditions. Actual project conditions differing from these design parameters may affect field results. The customer is responsible for verifying dimensional accuracy along with compliance with any applicable electrical, lighting or energy code.

Project Name: Pompano Beach Air Park Pompano Beach, FL

CASE #: 00502035

Footcandles calculated at grade

Filename: 220621MU1CISR1.AGI

Drawn By: Chris Schlitz
Date: 6/24/2022

SITE LIGHT PHOTOMETRIC PLAN
DRAWING NUMBER
SL-101

PZ22-12000020
8/3/2022

GHA

GALLO HERBERT ARCHITECTS

1311 W NEWPORT CENTER DRIVE DEERFIELD BEACH, FLORIDA 33442 PH. 954.794.0300 F.X. 954.794.0300

AA226001731
(SEAL)
WILLIAM J. GALLO FL AR0008440

Brian Herb ert
Digitally signed by Brian Herbert
Date: 2022.06.29 16:25:07 -04'00'
BRIAN P. HERBERT FL AR0015474
(PROJECT)

POMPANO BEACH AIR PARK PARCEL Y

601 NE 10TH ST.
POMPANO BEACH
FL 33060
(OWNER)

POMPANO BEACH

COMPANY NAME (REVISIONS)		
No.	Description	Date
1	D.R.C. SUBMITTAL	2022-06-28

PROJECT STATUS
D.R.C.
DATE
2021-03-24
PROJECT NUMBER
83-2020
SCALE
AS SHOWN

DRAWN BY: JET
CHECKED BY: JET
DRAWING TITLE: